

CAMELOT
FABRICS

Free
DIY!



Endearing Elephants (T-005)

Toll-Free: 1-800-361-4120 • 514-382-2400
info@camelotfabrics.com • camelotfabrics.com

Disney
DUMBO

© Disney

- Skill Level: ●●●●●●
- Approx. crafting time: 4 hrs
- Final Size:
Mama - 9"H x 9"W x 3-1/2"D
Baby - 6"H x 6"W x 2"D

Fabric Requirements

- Mama
 - Fabric A: Fat Quarter of Dumbo quilting cotton (44" wide) from Camelot Fabrics in 85160104 #1
 - Fabric B: Fat Eighth of 85160101 #3
- Baby
 - Fabric C: Fat Quarter of 85160103 #1
 - Fabric D: Fat Eighth of 85160104 #2



OTHER TOOLS & SUPPLIES

- yarn in coordinating colors: 36" for the Mama, and 12" for the Baby
- embroidery floss in contrasting color: 18" for the Mama, and 12" for the Baby
- 3.5oz (100g) fiber stuffing
- paper printer
- basic sewing supplies:
 - sewing machine
 - iron & pressing surface
 - needle & coordinating thread
 - scissors & fabric shears
 - straight pins
 - fabric marker

NOTES

Please wash, dry & iron your fabric before beginning.

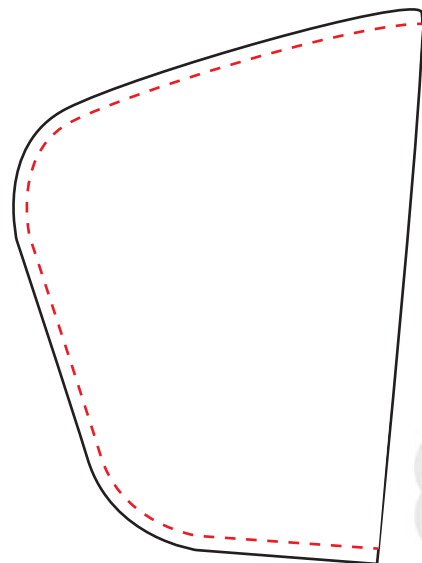
A 1/4" seam allowance is included in the template. Unless otherwise indicated, please use this allowance for all seams.

CUTTING

1. Print the Endearing Elephants template (pp 5-7) at 100% of actual size, and cut out the pieces.
2. Trace the template pieces onto folded double layers of the appropriate fabric as indicated on the template, and cut out the pieces in fabric. You should have (2) of each piece, mirror images of one another. If working with a directional print, make sure to place the template on the fabric so that the print runs in the desired direction.
3. Mark the tail and ear placements on the wrong sides of your fabric, and the eye placements on the right side of the fabrics, as indicated on the pattern pieces.
4. Cut your yarn into (6) 6" lengths for the Mama's tail, and (3) 4" length's for the Baby's tail.

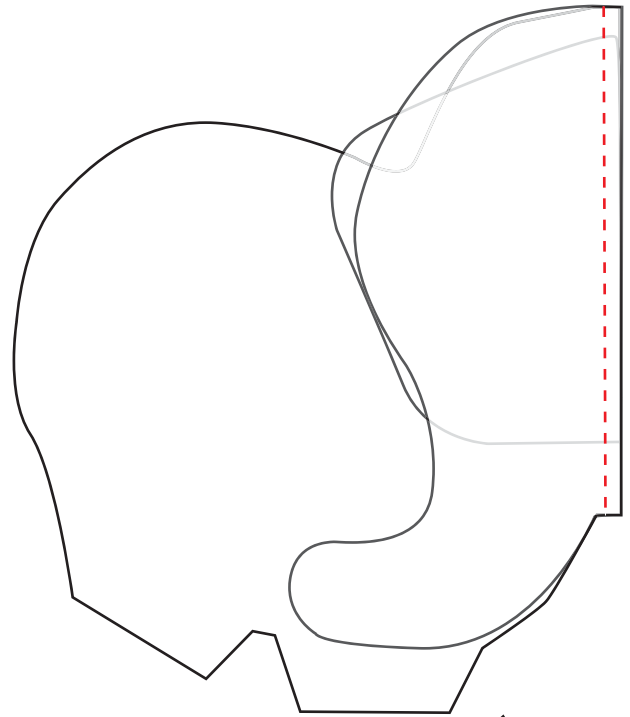
ASSEMBLY

5. Sew each A-B and D-C pair of Ear pieces together, Right Sides facing, leaving their straight edges open.
6. Press the seam open and turn the Ears Right Sides out.

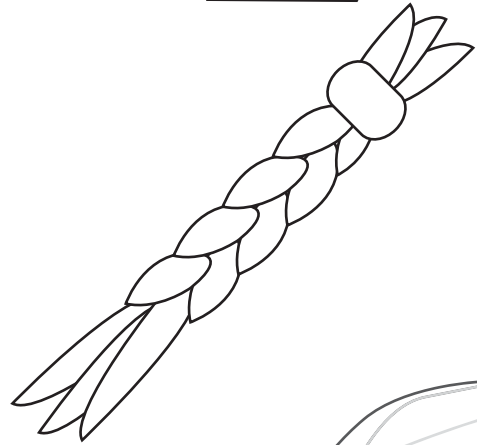


7. Sew a Head piece to its matching Body piece, Right Sides together, with an Ear piece sandwiched between them. The Ear's accent fabric (B or D) should be against the Head piece.

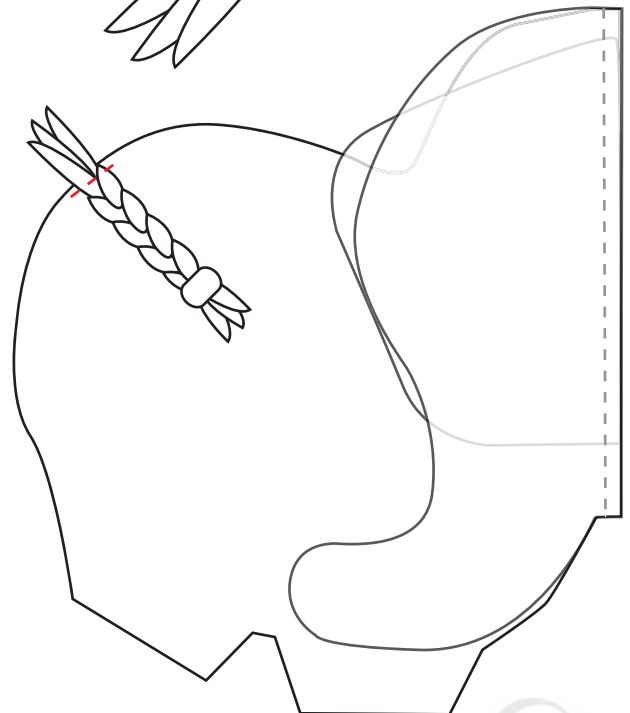
Note: make sure that the Ear is placed between the "Ear Placement" marks on the Body piece.



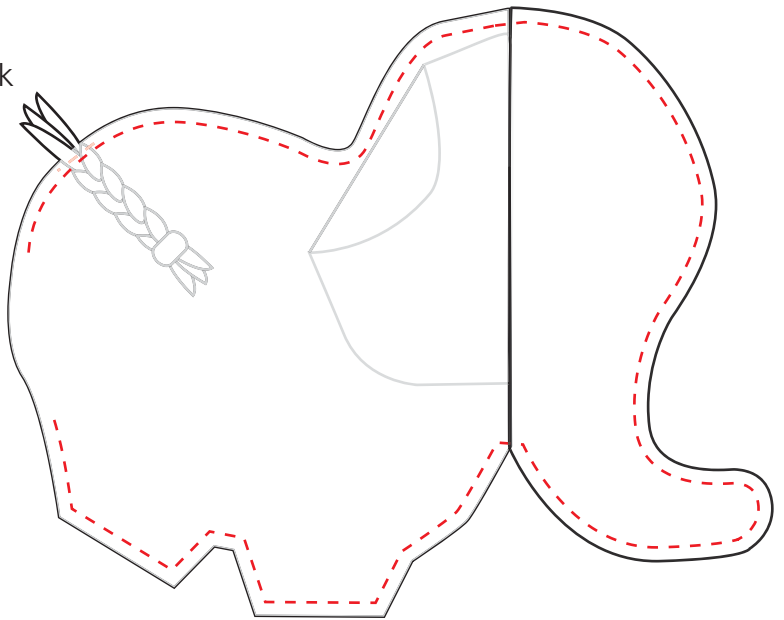
8. Tie all the yarn pieces for the Mama's tail together with a knot at one end, and braid the remainder. Repeat with the Baby's tail.



9. Tack your braided tail to the "Tail Placement" mark on one of the appropriate elephant's Body pieces as shown, with the loose end toward the fabric's edge.



10. Tuck the Ears against their Body pieces to keep them out of the way, and sew each pair of Elephant sides together, Right Sides facing. Leave a gap at the Elephants' back legs as shown. Clip your corners, press the seams open and turn your Elephants Right Side out.



11. Un-pin the Ears, stuff your Elephants and sew the gaps closed using a ladder stitch.

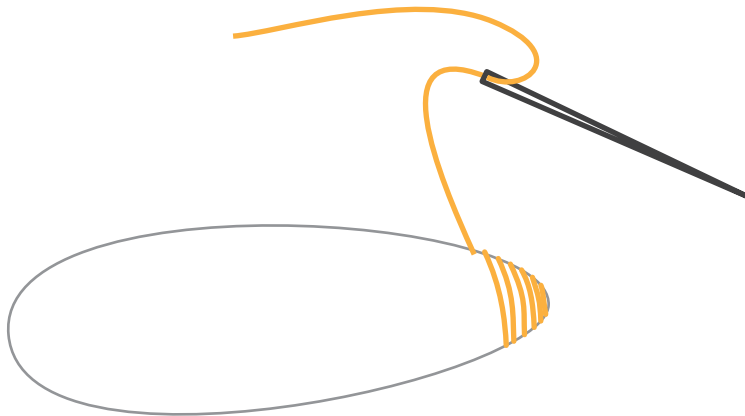
12. Embroider an eye on each side of the Elephants' faces with a satin stitch.

Satin Stitch

The satin stitch is perfect for coloring in small spaces. We used it to make little round eyes on our elephant.

Sew a stitch across the width of the space you want to fill. Sew a second one right next to it, running parallel. Repeat this process until the side-by-side lines of floss fill the desired space in your design. There's a little gap between the thread lines in our diagram to help you see what's going on, but in real life the threads should sit snug up against each other.

Tie off the end of your thread.



Endearing Elephants
(T-005)

Test Square
1" (2.54 cm)

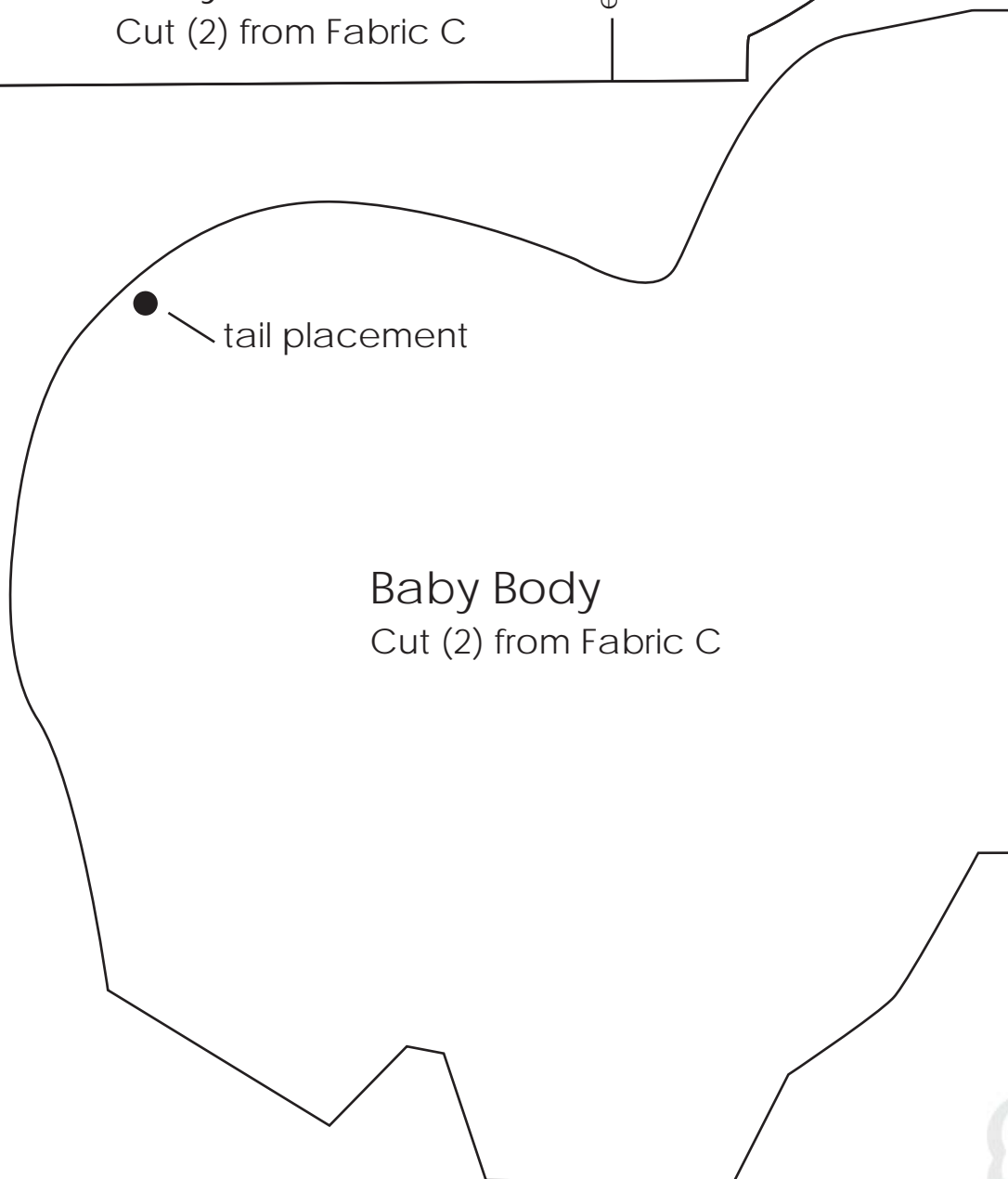
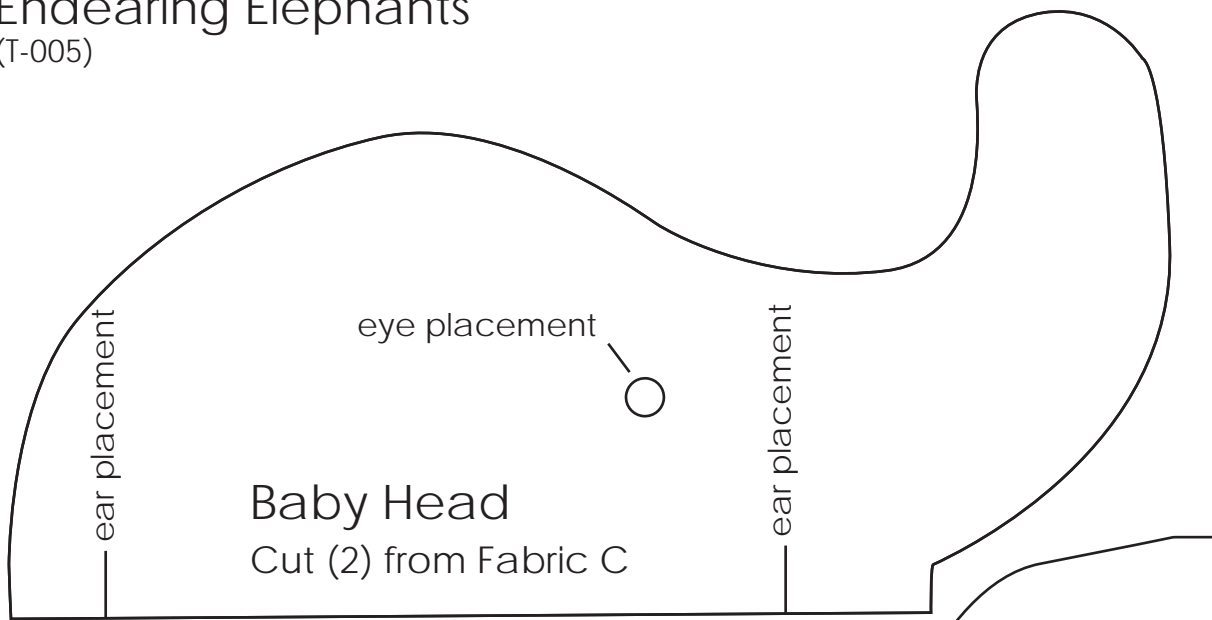
● tail placement

Mama Body
Cut (2) from Fabric A



Endearing Elephants

(T-005)



Endearing Elephants
(T-005)

ear placement

Mama Head

Cut (2) from Fabric A

eye placement



ear placement

ear top

Baby Ear

Cut (2) from Fabric C

Cut (2) from Fabric D

Mama Ear
Cut (2) from Fabric A
Cut (2) from Fabric B

ear top

CAMELOT
FABRICS