



## Wallace the Whale (T-006)

Toll-Free: 1-800-361-4120 • 514-382-2400  
info@camelotfabrics.com • camelotfabrics.com



Exclusive Project Design:  
Made by Marion for Camelot Fabrics

heather rosas  
heatherrosas.com



- Skill Level: ●●●●●
- Approx. crafting time:  
4 hours
- Approx. final size:  
27"L x 8"H x 16"W

### Fabric Requirements

- 2/3 yard of Mixology Sashiko in Indigo (44" wide) from Camelot Fabrics in 21008-0097 for Wallace's Back
- 1/2 yard of Mixology Stripes in Royal from Camelot Fabrics in 21004-0016 for Wallace's Belly

## OTHER TOOLS & SUPPLIES

- fiber stuffing or fabric scraps
- paper printer
- 24" contrasting embroidery floss & an embroidery hoop, for eyes
- 2 yds of ribbon, for hanging (optional)
- basic sewing supplies:
  - sewing machine
  - needle & coordinating thread
  - iron & pressing surface
  - scissors & fabric shears
  - straight pins
  - fabric marker

## NOTES

1. Please wash, dry & iron your fabric before beginning.
2. Use a 1/4" seam allowance throughout.
3. All seams are sewn Right Sides together.

## CUTTING

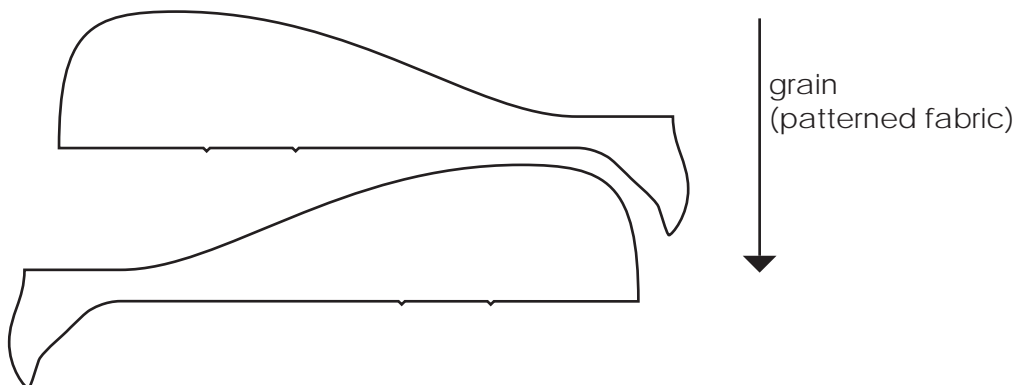
1. Print the Wallace the Whale template (pp 6-12) at 100% scale and cut out the pages at their marked borders. Join the pages according to their numbered triangles and cut out the template pieces.
2. Trace or pin the template to your fabric as indicated on the pattern pieces, and cut out the pieces in fabric. Take care to include the notches!

You will have:

- (2) Back pieces, mirror images of each other
- (2) Back fins, mirror images of each other
- (1) Belly, cut on the fold line
- (2) Belly fins, mirror images of each other

Note: For a directional print, trace the Back piece (2x) onto a single layer of fabric as shown, so that in both pieces the fabric's pattern runs from the top of Wallace's back toward his belly.

For non-directional cottons, cut your pieces from folded double layers of fabric.



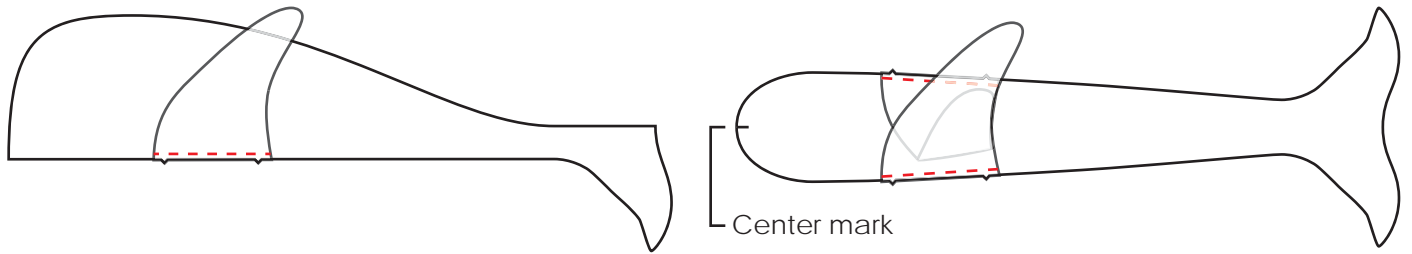
## EYES

3. Transfer the Eye marks from the Back template to the Back fabric pieces. If you're having trouble seeing the Eye through your fabric, use straight pins to mark either end and the center of the Eye curve, then trace between the pin points.
4. Embroider a sleepy Eye on each Back piece with a chain stitch. See instructions on page 4.

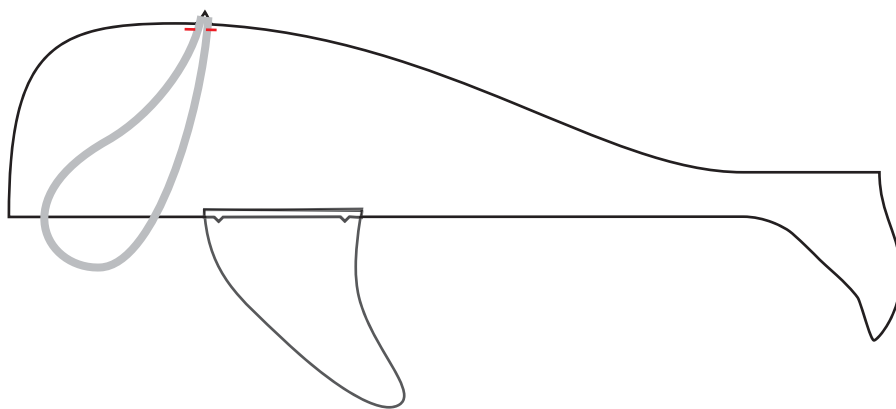
## ASSEMBLY

5. Sew the Fins to their matching body pieces as shown right sides facing, with the notches aligned (the fins should point toward the tail ends of the body pieces). Press these seams toward the fins.

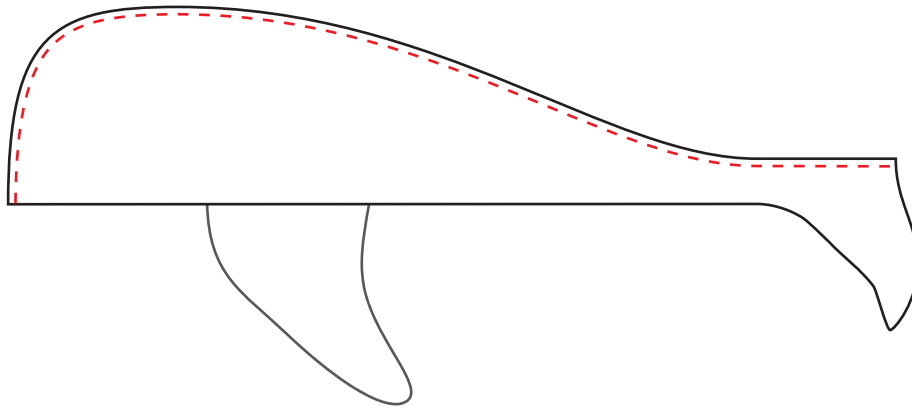
Fold the belly piece in half and mark the center of the curved end of the piece as shown.



6. Baste the ends of your ribbon to the Wrong Side of one Back piece as shown, at the notch in its top edge. The raw ends of the ribbon should point toward the fabric's edge, and the long loop should point away from the edge.



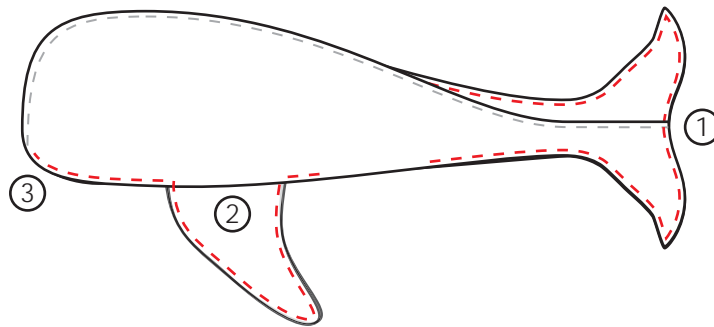
7. Pin & sew the Back pieces together as shown, from the center of the tail to the tip of the nose. Backstitch at the beginning & end of this seam. Clip into your curves & press the seam open. Turn Wallace Right Side out, press the seam again and turn him Wrong Side out once more.



8. Pin & sew the Belly & its Fins to the Back & its Fins, Right Sides facing. Begin by pinning the tails together, then the Fins where they join the bodies, then around the remaining body, fin & nose edges. Make sure to line up the center mark of the belly piece to the center seam of the body piece.

TIP: using lots of pins to distribute the fabric evenly around the curve will help to avoid any puckering when sewing.

Leave a 6in. gap behind one Fin, for turning. Backstitch at the beginning & end of this seam.



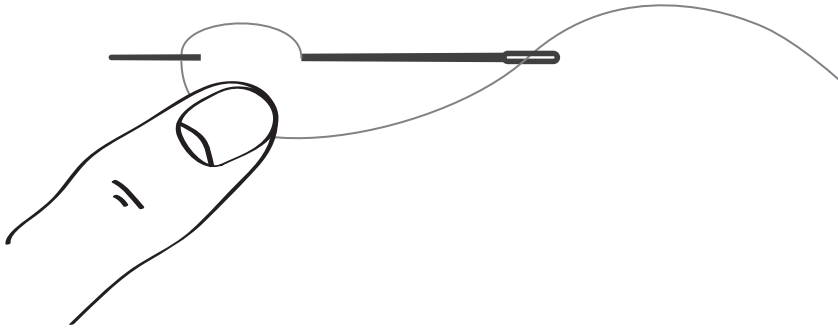
9. Clip into the corners where the Fins join the body, and around your curves. Press the seam open & turn the whale Right Side out through the gap behind his Fin. A knitting needle or chopstick makes it easier to invert the tips of his Fins & tail.

10. Stuff Wallace firmly. Begin by stuffing one fin. Stitch in the ditch by hand or machine, between the top and bottom seams of one fin, closing the gap between them. Repeat with the second fin.

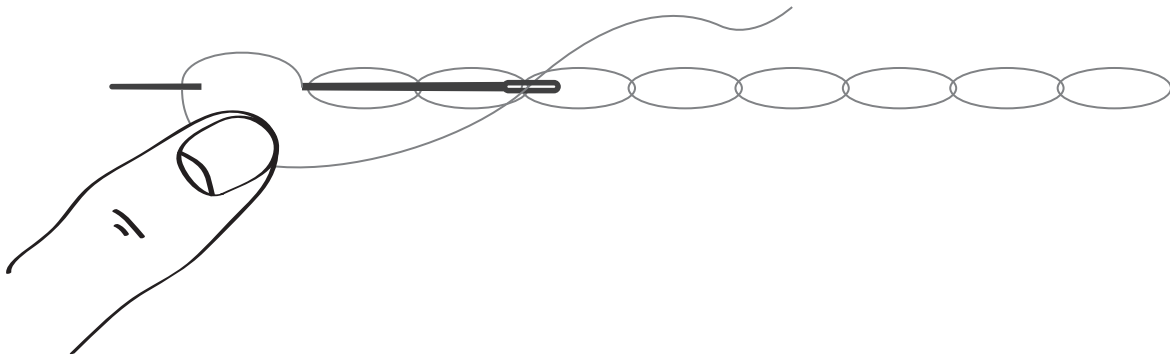
11- Stuff the rest of Wallace firmly, making sure to stuff all the way into his tail. Sew the opening closed using a ladder stitch. See instructions on page 5.

## Chain Stitch

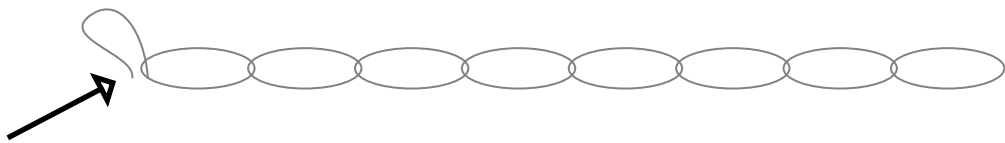
1. Thread needle with the embroidery floss and knot your thread, leaving small tail at the other end.
2. Insert needle from the back into the very beginning of your drawn line (you will be sewing from right to left if you are right-handed).
3. Reinsert the needle right back into where it emerges from the fabric and bring it out a stitch length away along the drawn line. Hold down the excess thread with your left thumb and pass the needle over the thread. Pull taught - but not too tight! This will make the first 'link' in the chain.



4. Reinsert the needle right back into where the thread emerges from the fabric and repeat step three to create the next 'link'.

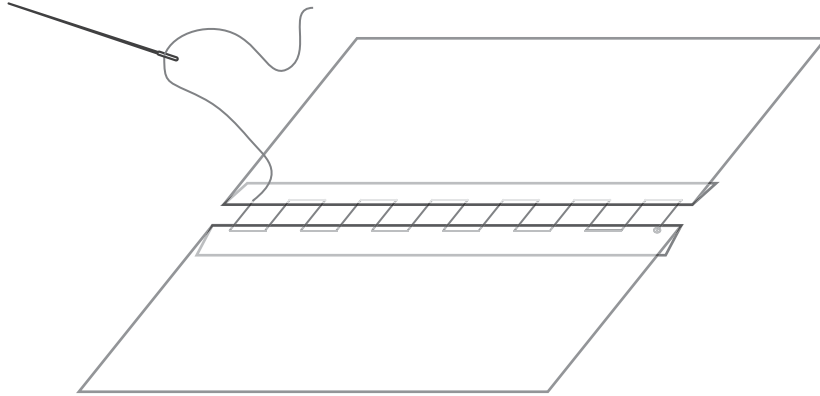


5. Continue making the chain stitch in this manner until you get to the end of the drawn line.
6. When you have made your final 'link', insert the needle in the fabric just outside of the loop or link, and bring the thread to the back. Knot your thread and clip it.



## Ladder Stitch

1. Working from right to left (or left to right, if left handed) insert the needle into the body and bring it out into the fold of the seam allowance.
2. Insert needle into the fold directly across where it came out. Let the needle travel in the fold towards the left and bring it out about 1/8" further.
3. Repeat Steps 1 & 2 until you get to the end of the opening.



4. Holding the fabric with your right hand, pull the thread with your left hand to close the gap in the opening, being careful not to pull too tightly.
5. Make a knot: take a tiny backstitch and pull the thread until you have a small loop. Insert the needle into the loop from right to left. Pull the thread until you have a second loop. Insert the needle into the loop from left to right. Pull to tighten the knot.
6. Push the needle back into the work right where you made the knot. Come out about 1/2" further and snip the thread.

# Wallace the Whale (T-006)

**Back**  
Cut (2) from Back fabric  
(mirrored)



grain  
← (patterned fabric)



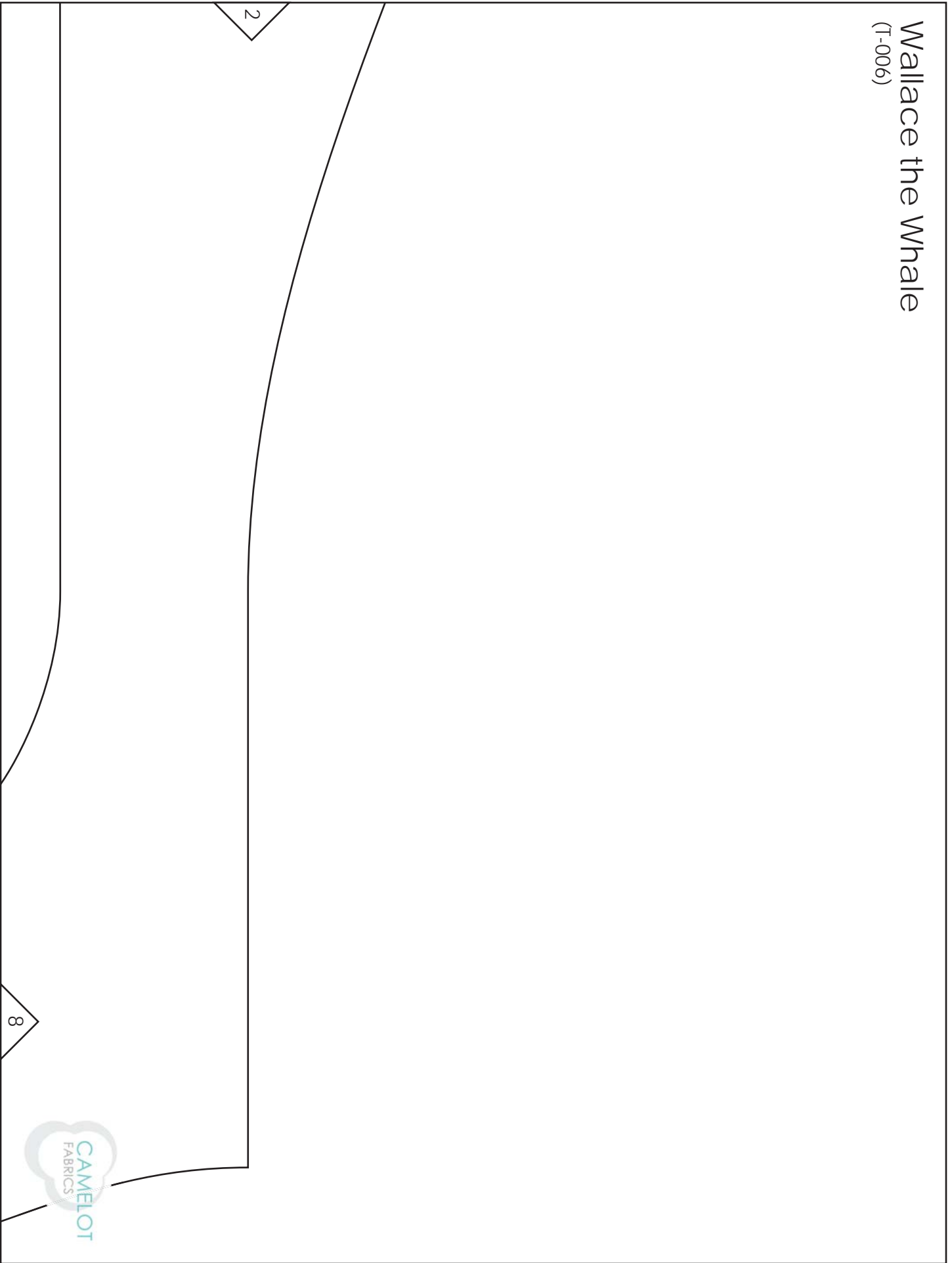
# Wallace the Whale (T-006)

Test Square  
1in.  
2.5cm

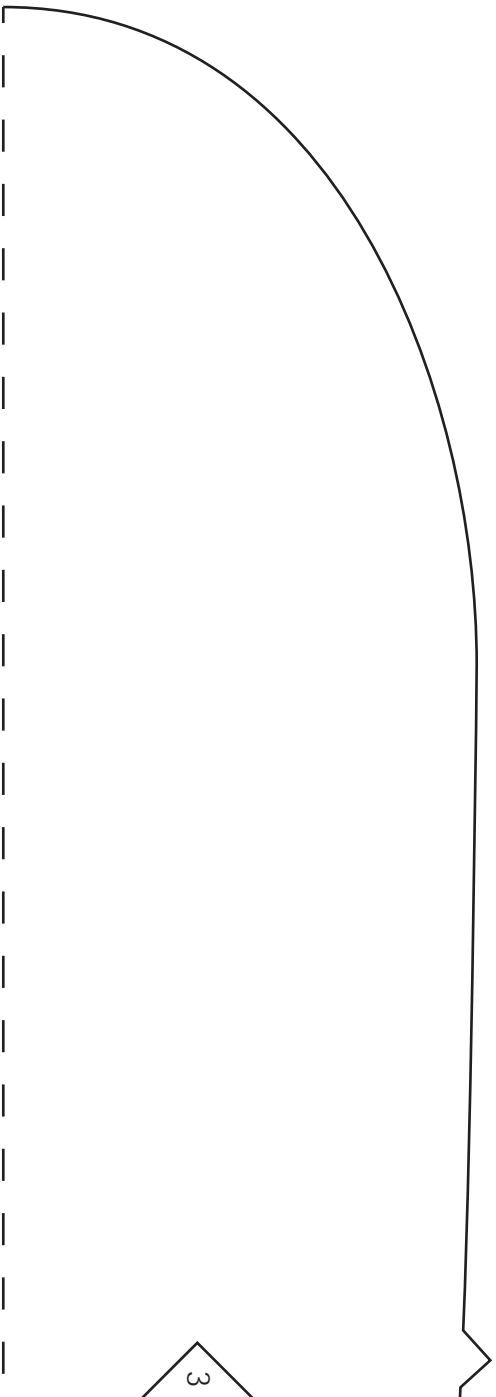




# Wallace the Whale (T-006)



# Wallace the Whale (T-006)



# Wallace the Whale (T-006)



Belly  
Cut (1) on folded double layer

fold



Wallace the Whale  
(T-006)

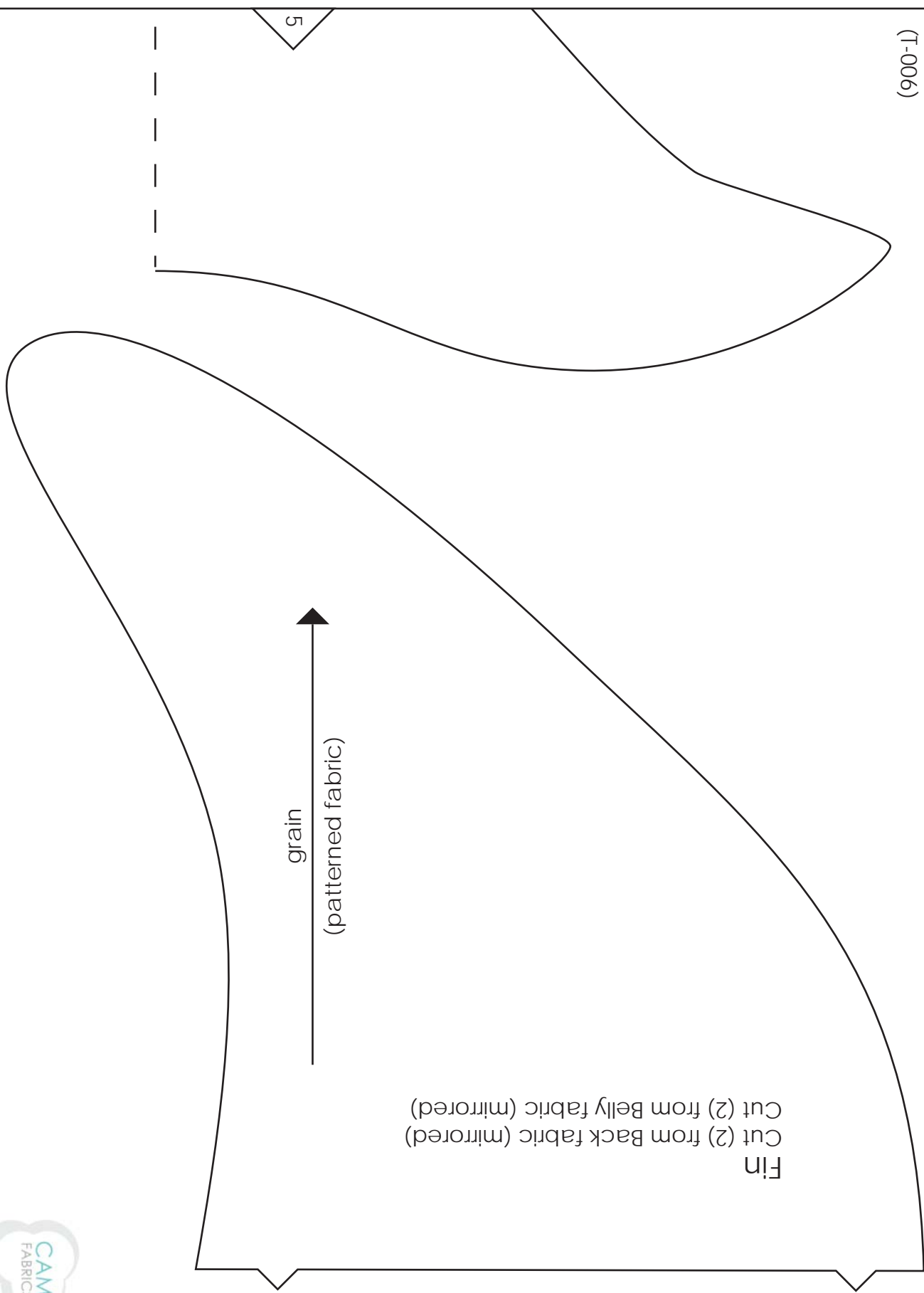
8

4

5



# Wallace the Whale (T-006)



Fin  
Cut (2) from Back fabric (mirrored)  
Cut (2) from Belly fabric (mirrored)