



### Hostess Apron (A-010)

Toll-Free: 1-800-361-4120 • 514-382-2400  
info@camelotfabrics.com • camelotfabrics.com



Shirley Copperwhite Designs 2018 ©

- Skill Level: ●●●●●
- Approx. crafting time:  
Day project
- Final Size (excluding ties):  
33"W x 36"H

#### Fabric Requirements



• 1 yd of Spring Birds quilting cotton (44" wide) from Camelot Fabrics in 28180101 01 (Fabric A)



• 3/4 yd of Spring Birds quilting cotton in 28180104 03 (Fabric B)



• 1/2 yd of Fresh Solids quilting cotton (44" wide) from Camelot Fabrics in 214-0032 Wildberry (Fabric C)

## OTHER TOOLS & SUPPLIES

- 3-1/3 yards of double-fold bias binding in a coordinating color
- paper printer
- basic sewing supplies:
  - sewing machine
  - needle & coordinating thread (We used Aurofil 100% Egyptian cotton in #2277)
  - iron & pressing surface
  - measuring tape
  - scissors & fabric shears
  - straight pins
  - fabric marker

## NOTES

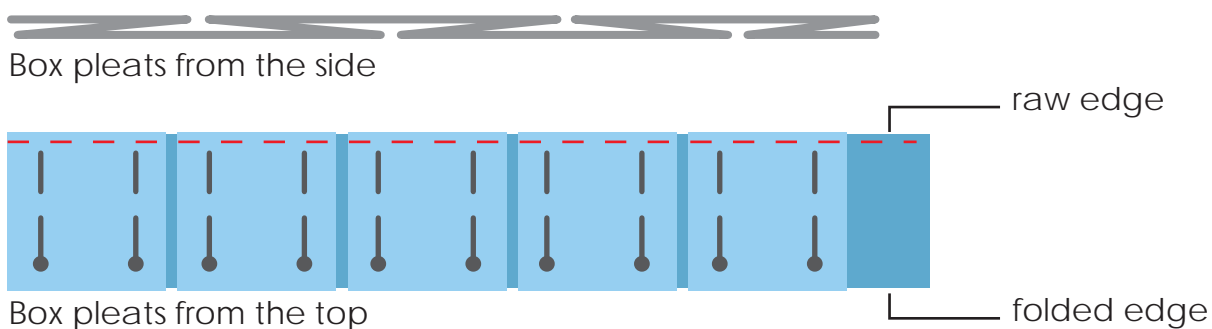
- Please wash, dry & iron your fabric before beginning, and trim the selvages.
- Unless otherwise directed, use a 1/2" seam allowance throughout.
- WOF = Width of Fabric.
- A red dashed line indicates the seam being executed in each step.

## CUTTING

1. Print the Hostess Apron template (pp 4-14) at 100% of actual size and trim the pages along their borders. Tape the pages together by aligning the numbered triangles, and cut out the template.
2. Pin or trace the Apron template onto a double layer of your Main fabric, with the dashed line of the template against the fabric's fold as indicated. Cut out the Apron piece.
3. Cut (7) 4" x WOF strips from your Ruffle fabric.
4. Cut (2) 60" strips from your bias binding.

## MAKING THE RUFFLE

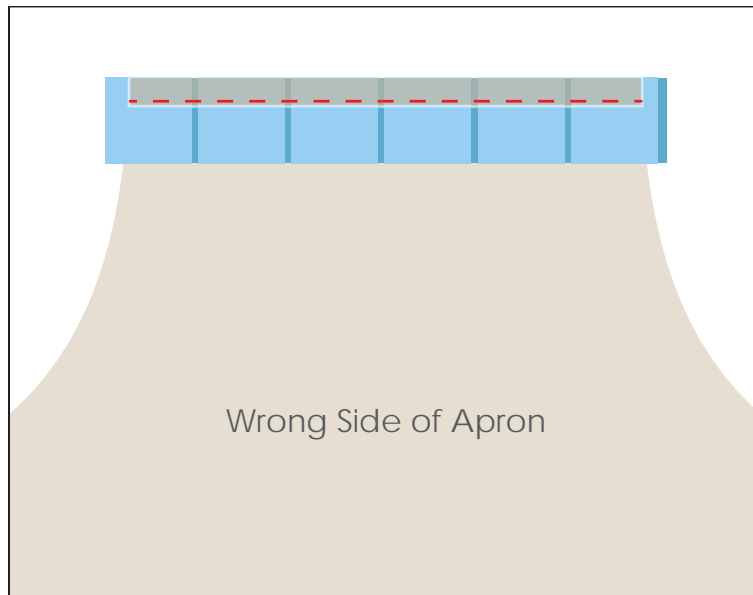
1. Join the Ruffle strips end-to-end, Right Sides facing. Press the seams open.
2. Fold this composite strip in half lengthwise, Wrong Sides together, and press the crease.
3. Form 2" wide box pleats along the length of the Ruffle strip as shown, pinning each pleat in place as you go. The top of each pleat should be pretty much square.



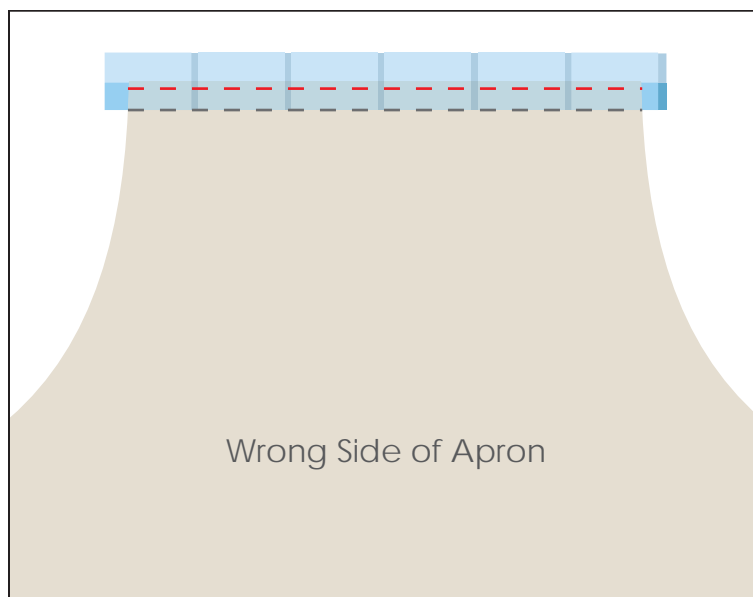
4. Baste the pleats in place with a 1/4" seam along the raw edge of the Ruffle, remove the pins and press to set the pleats' creases.

## ASSEMBLY

1. Press a 1/2" hem along the top edge of the Apron, Wrong Sides facing.
2. Cut an 11" piece of your Ruffle. Fit the raw edge of this piece into the crease of the hem you just made in the Apron's top edge. Sew the Ruffle in place with a scant 1/2" seam allowance.



3. Press the Ruffle away from the Apron so it is folded back on itself as shown. The raw edges of the Apron & Ruffle are now nested into each other's folds.
4. Sew a 1/8" seam through all layers as shown, and trim the excess Ruffle.

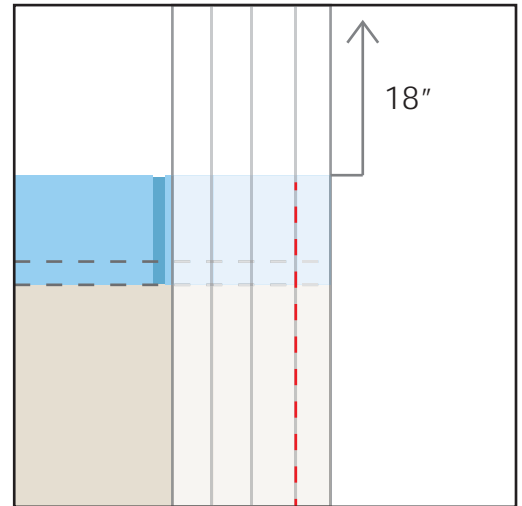


5. Sew the balance of the Ruffle around the curved bottom edge of the Apron in the same manner as you sewed the top-edge Ruffle in place.

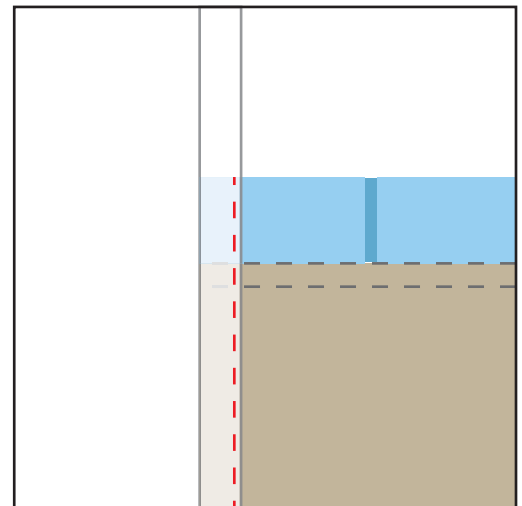
## FINISHING

1. With the Wrong Side of the Apron facing upward, open up (1) 60" piece of binding. Leaving an 18" tail, line up the binding with the side of your Apron, the outside of the bias against the Apron. Sew the binding around the Apron's underarm curve, including the Ruffle at either end, stitching along the binding's outermost fold line. Backstitch at the beginning and end of the seam.

You'll have about 26" of extra binding at the end of this seam. Don't trim it - this will become one of your waist ties.

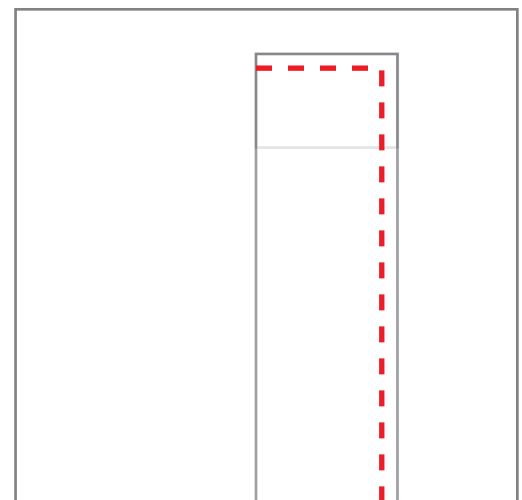


2. Turn your Apron over so that the Right Side is facing up. Wrap the bias tape around the Apron's edge, with its own long edge tucked in toward the center of its fold (it'll want to do this naturally), and stitch it in place with a seam 1/8" from the inner fold.



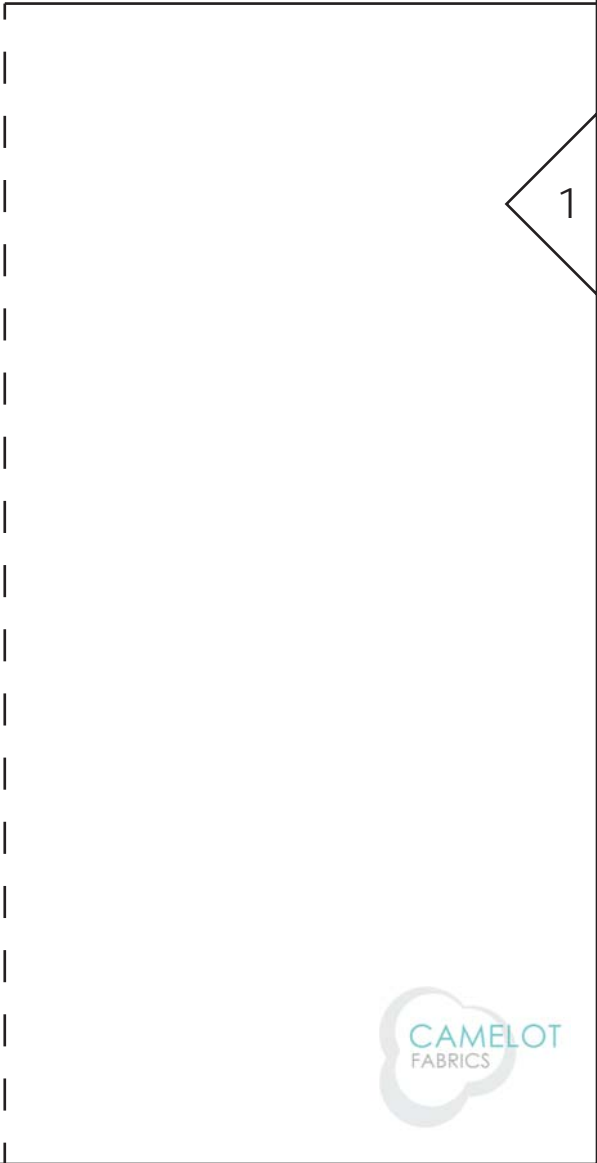
3. Stitch the binding closed along the length of its tails at the neck & waist, tucking the short ends neatly inside the fold.

4. Repeat Steps 1-3 with the second side of the Apron.



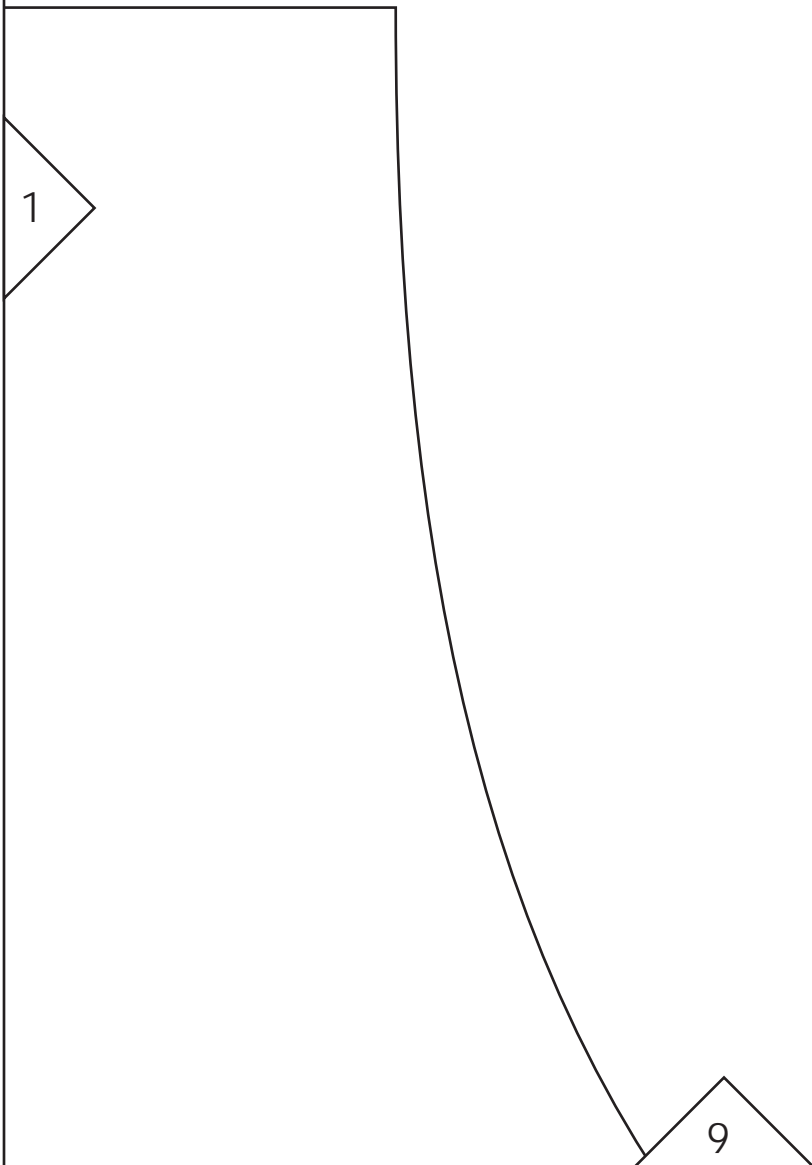
# Hostess Apron

(A-010)



# Hostess Apron

(A-010)



Hostess Apron  
(A-010)

8

2

fold

10



Hostess Apron  
(A-010)

9

2

3

Apron

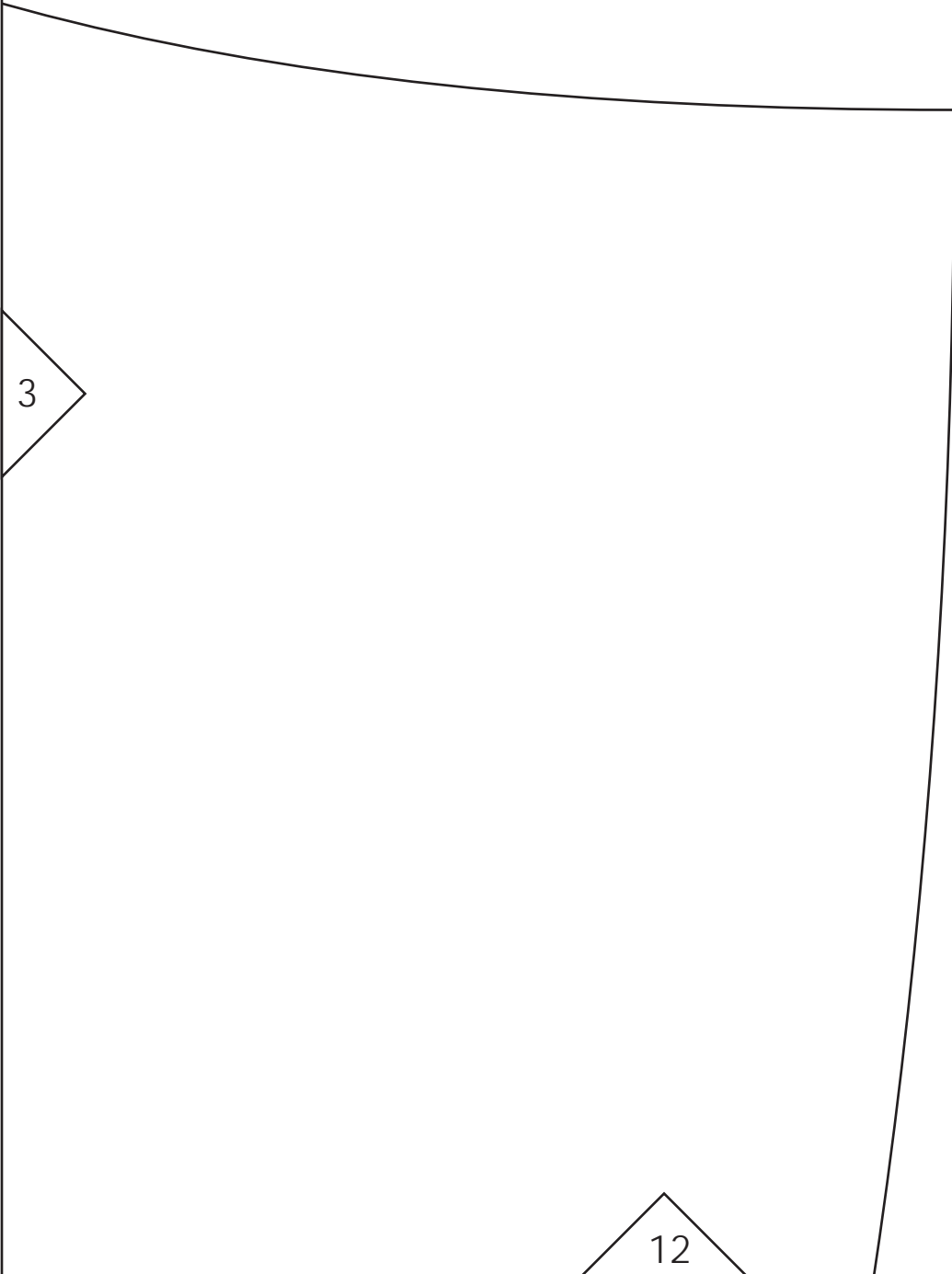
11





# Hostess Apron

(A-010)



Hostess Apron  
(A-010)

10

4

13



Hostess Apron  
(A-010)

11

4

5

14



Hostess Apron  
(A-010)

12

5

15



Hostess Apron  
(A-010)

13

6



Hostess Apron  
(A-010)

14

6

7



Hostess Apron  
(A-010)

15

7