



Quilted Bucket Bag (P-014B)

Toll-Free: 1-800-361-4120 • 514-382-2400
info@camelotfabrics.com • camelotfabrics.com



Exclusive Project Design:
 Made by Marion for Camelot Fabrics

heather rossas
heatherrossas.com



- Skill Level: ●●●●●●
- Approx. crafting time:
Weekend Project
- Final Size:
13"W x 13"D x 20"H



Fabric Requirements

- Upper Shell - 2/3 yd of Ahoy Matey quilting cotton (44" wide) from Camelot Fabrics in 61170401 #1.
- Lower Shell - 1 yd of 2141-0016
- Lining - 1-1/4 yds of 21008-0097
- Accent - 1/3 yd of 214-0016

OTHER TOOLS & SUPPLIES

- 1 yd of quilt batting (58" wide)
- (2) 1-1/2" to 2" metal rings
- (10) 7/16" metal grommets
- paper printer
- basic sewing supplies:
 - sewing machine with even feed foot
 - needle & coordinating thread
 - iron & pressing surface
 - scissors & fabric shears
 - straight pins
 - fabric marker

NOTES

1. Please wash, dry & iron your fabric before beginning.
2. Unless otherwise directed, sew all seams with a 1/2" seam allowance.
3. RST = Right Sides Together.
4. WOF = Width of Fabric.

CUTTING

1. Print the Quilted Bucket Bag Template at 100% size. Measure the Test Square to make sure your pattern was printed at the correct scale.
2. Trim the pattern pieces along the marked borders, and join them according to the numbered triangles. Cut out the pieces.
3. Pin/trace the patterns to your fabric and cut out the pieces as indicated on the template.

Draft & cut the following additional pieces:

Upper Shell

- (1) WOF x 15" rectangle for the bag's upper body.
- (2) 24" x 3" rectangles for the strap.

Lower Shell

- (1) WOF x 8" rectangle for the bag's lower body.

Lining

- (1) WOF x 22" rectangle for the inner body.
- (2) WOF x 2" strips for binding.

Accent

- (5) WOF x 2" strips for binding & ties.

Batting

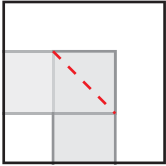
- (1) 43" x 24" rectangle.
- (1) 15" square.
- (1) 26" x 4" rectangle.



MAKE THE BINDING

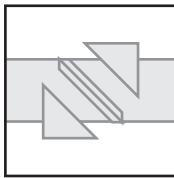
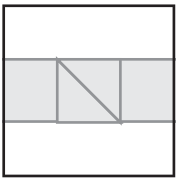
You'll make:

- (1) pieced Binding from your (5) Accent strips.
- (1) pieced Binding from your (2) Lining strips.



1. Pin & sew the ends of (2) strips RST as shown, with the seam running at 45° to the fabrics' edges.

Lower Shell: repeat with the remaining strips to form (1) continuous strip.



2. Press the seams open and trim the seam allowances to 1/8".

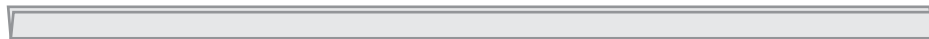
c) Fold & press the Binding in half lengthwise, Wrong Sides facing, and unfold.



d) Fold each long edge to the center crease, and press.



e) Fold the strip in half lengthwise, so the folded edges are together, and press.

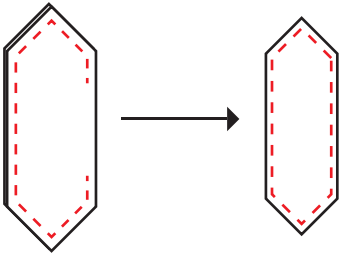


ASSEMBLY

1. Sew the upper and lower body pieces together top-to-bottom as shown. Press the seam open.

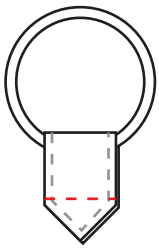


2. Sandwich your 43" x 24" batting rectangle between the Lining body and outer pieced body, with the fabrics' Right Sides facing outward and their edges lined up. Baste & quilt as desired, and trim any excess batting.
3. Repeat Step 2 using your 15" batting square and the (2) Bottom circles.
4. Repeat Step 2 once more, using the 26" x 4" batting rectangle and the (2) strap pieces.

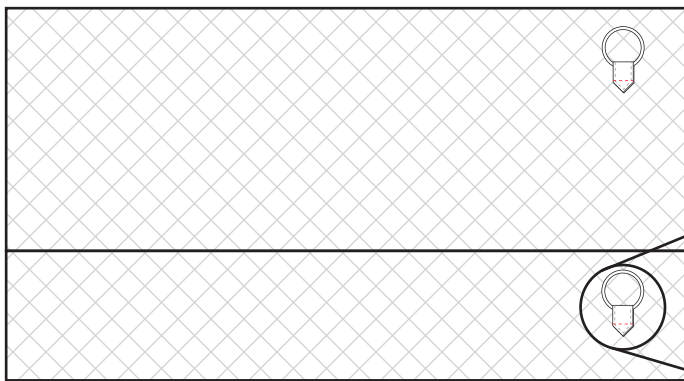


5. Sew the Ring Tabs together in pairs, RST, with a 1/4" seam allowance. Leave a gap in (1) long side for turning. Clip your corners, press the seams open, and turn the Tabs Right Side out.

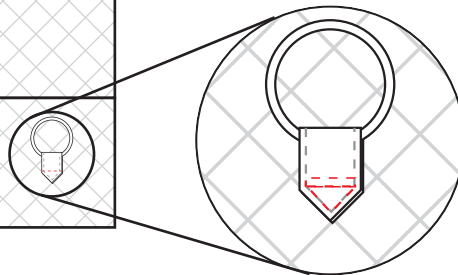
6. Topstitch 1/8" from the Tabs' edges, including the gaps.



7. Fold each Tab around a metal ring and sew the ends together as shown.



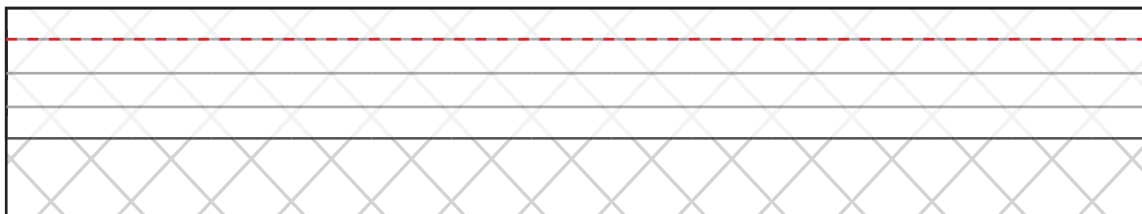
8. Topstitch both Tabs to the bag's body with an 1/8" seam allowance as shown, roughly 3" from the body's nearest edges.



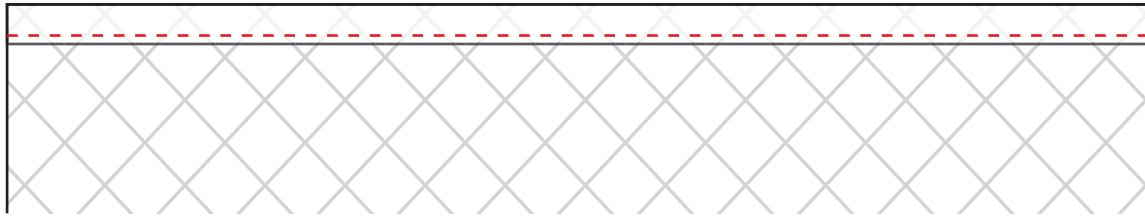
9. Sew the short sides of the body together, RST. Trim the seam allowance to 1/4".

10. Bind the seam's edges with your Lining Binding. Here's how:

a) Align (1) long edge of the Binding with the edge of the seam allowance, with the Right Side of the Binding against the work. Pin & sew in place along the crease line nearest to the raw edge.



b) Wrap the Binding around the seam allowance and tuck its remaining raw edge in toward the seam allowance's raw edge. Pin in place and topstitch the Binding 1/8" from its folded edge.



11. Pin & sew the Bottom to the bottom raw edge of the Body, RST. We like to use a lot of pins for this part, and we find it's easiest to sew with the Bottom facing upward as we work.

12. Trim the seam allowance to 1/4" and bind it with the remaining Lining Binding. The method is slightly different from binding the straight edge in Step 10.

a) Leave a 2" "tail" of Binding at the beginning of your seam.

b) Sew around the circumference of the seam, the same way that you attached the Binding to the straight seam in Step 10.

c) Once you've circled around the work, sew precisely up to the beginning of the seam and cut off the excess Binding, leaving a 2" tail.

d) Sew the tails RST, as closely as possible to the work.

e) Flip the Binding to the Right Side; pin and topstitch as you did the Binding in Step 10.

13. Bind the top raw edge of the bag with the Lower Shell Binding, the same way that you bound the body/bottom seam.

14. Bind the (2) long edges of the Strap with the Lower Shell Binding, the same way that you bound the straight edge in Step 10.

15. Sew the Strap Tabs together in pairs with a 1/4" seam allowance, RST, leaving (1) short end open. Clip the corners, press the seams open, and turn Right Side out. Fold the open edges to the inside of the Tabs and press.

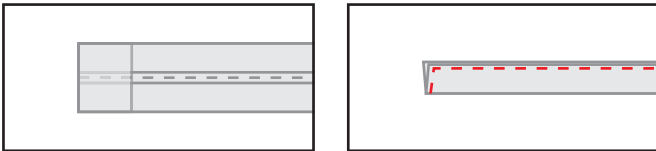


16. Feed each of the Strap's raw ends into the open edge of a Strap tab and topstitch in place.



17. Fold each Strap Tab around a metal ring and topstitch, the same way that you attached the Ring Tabs to the bag in Step 8.

18. Cut a 50" - 60" length from the remaining Accent Binding, fold the raw ends to the inside, and topstitch the edge closed.

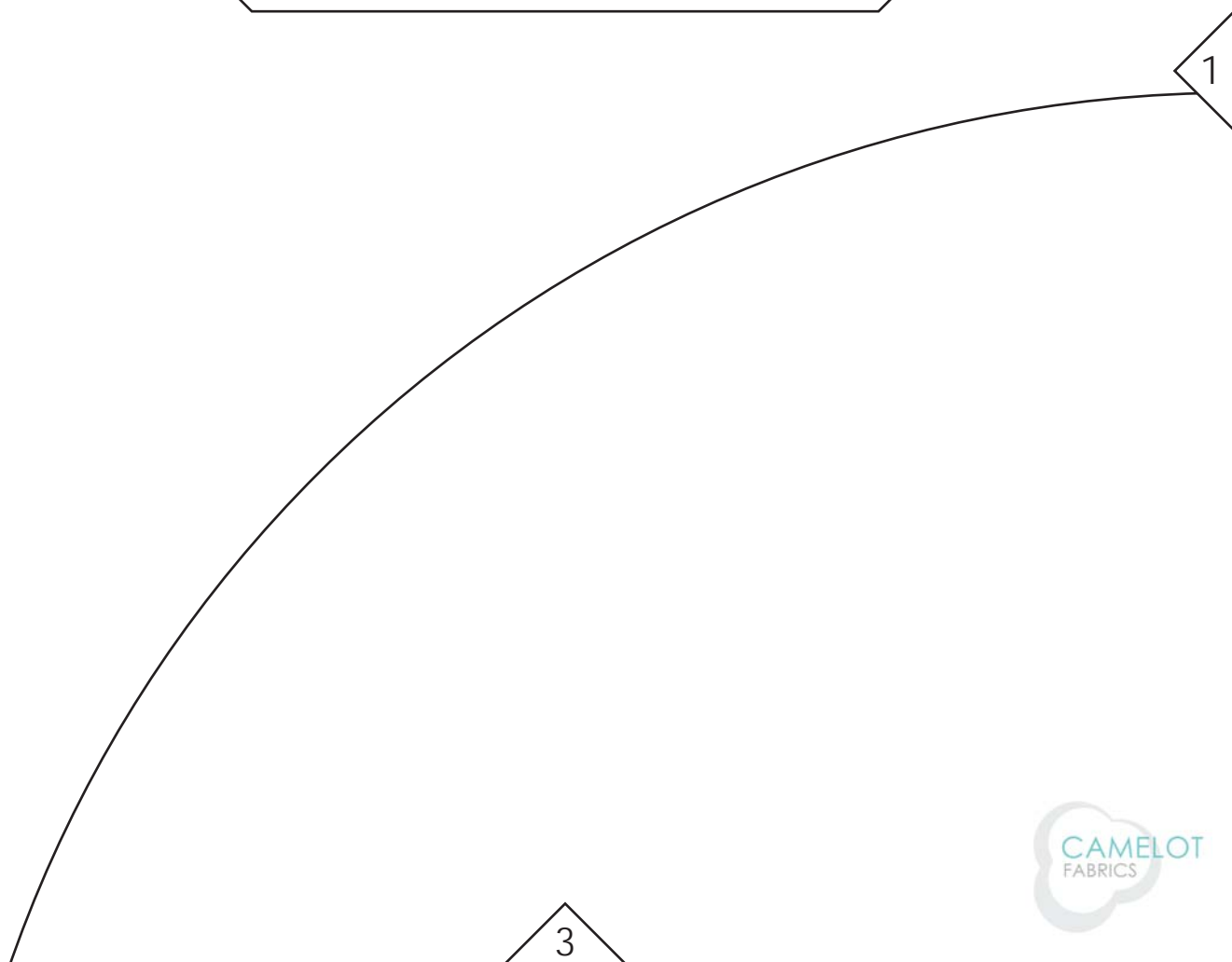
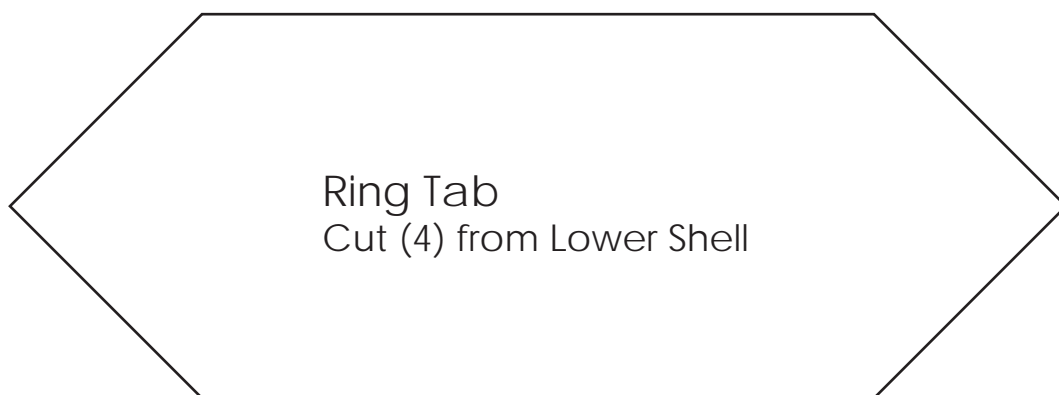


19. Mark (10) points approximately 4" apart around the top of the bag, 1" - 2" from the top edge. Install a grommet at each point, according to the manufacturer's directions.

20. Feed the long Binding length through the grommets, going alternately in and out of the bag. Pull the ends and tie them in a bow to close the bag.

Quilted Bucket Bag
P-014

Test Square
2" x 2"
5cm x 5cm



Quilted Bucket Bag

P-014

Strap Tab
Cut (4) from Lower Shell

1

4



Quilted Bucket Bag

P-014

3

2



Quilted Bucket Bag
P-014

4

Bottom
Cut (1) from Lower Shell
Cut (1) from Lining

2